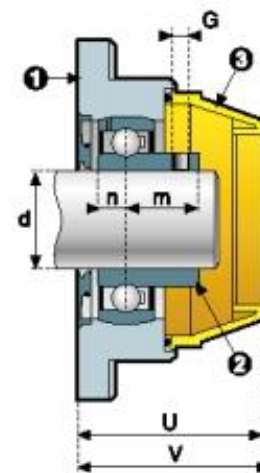
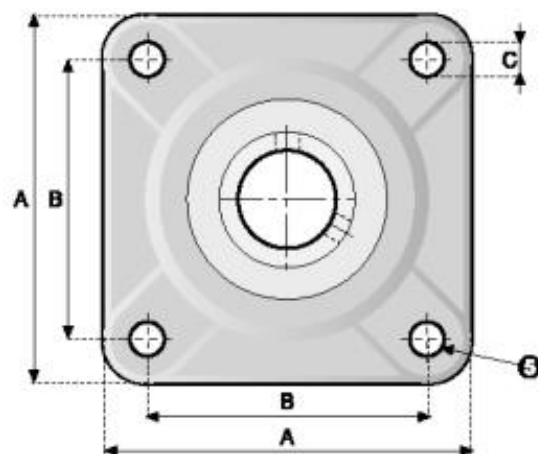
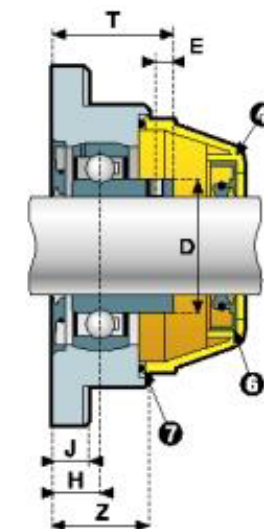


## Series **UCFQ-RL**

### Flanged bearing with solid housings for plain shafts $d$ 30-40 mm



closed version  
with grub screws



open version  
with grub screws

#### COMPONENTS

- 1 Housing in plastic material.
- 2 Adjustable ball bearing, pre-lubricated by means of grease-nipple or a quick coupler.
- 3 Clip-on safety cap (closed version).
- 4 Clip-on safety cap (open version).
- 5 Spacers to reinforce bolt holes.
- 6 Rotary shaft seal ring with extra dust-protection lip.
- 7 Heavy duty O-Ring.

Ø d mm	CODE <b>GREY</b> VERSION		DIMENSIONS (mm)														BEARING LOAD RATINGS		MAX RADIAL LOAD CAPACITY ON PLASTIC HOUSING <b>PA (N)</b>	WEIGHT (Kg)
	CLOSED	OPEN	A	B	C	D	E	G	H	J	Z	T	m	n	U	V	DYNAMIC C (N)	STATIC Co (N)		

SHAFT LOCKING WITH GRUB SCREWS																				
30	<b>50206QRL</b>	<b>55206QRL</b>	108	82.5	11	40	5.9	M6x0.75	14.5	12.5	29	36.5	22	8	56	58	15000	11300	11500	0.50
40	<b>50208QRL</b>	<b>55208QRL</b>	130	101.5	14	52.7	8	M8x1.00	18	16	35	50.1	32.1	9	58	60	22400	17900	12500	0.82

Ø d mm	CODE <b>BLACK</b> VERSION		DIMENSIONS (mm)														BEARING LOAD RATINGS		MAX RADIAL LOAD CAPACITY ON PLASTIC HOUSING <b>PA (N)</b>	WEIGHT (Kg)
	CLOSED	OPEN	A	B	C	D	E	G	H	J	Z	T	m	n	U	V	DYNAMIC C (N)	STATIC Co (N)		

SHAFT LOCKING WITH GRUB SCREWS																				
30	<b>50206VRL</b>	<b>55206VRL</b>	108	82.5	11	40	5.9	M6x0.75	14.5	12.5	29	36.5	22	8	56	58	15000	11300	11500	0.50
40	<b>50208VRL</b>	<b>55208VRL</b>	130	101.5	14	52.7	8	M8x1.00	18	16	35	50.1	32.1	9	58	60	22400	17900	12500	0.82

The dimension of the housings related to codes printed in bold letters are unified according to international standards.

## COLOUR

- Bearing support in grey or black.
- Safety cap in yellow.
- For sufficient quantities parts can be produced in different colours.