

## Standard cross blocks



AISI 304  
Stainless steel



Acetal resin

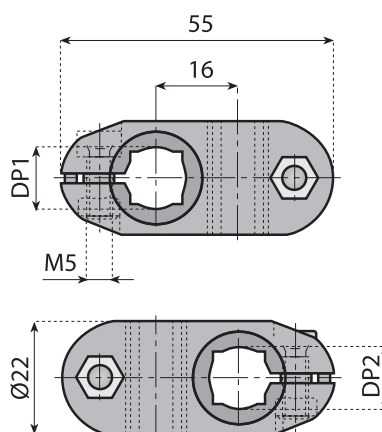


Reinforced  
polyamide



Accessories

Preferred type, readily available (codes marked in red)



### MINI CROSS BLOCK

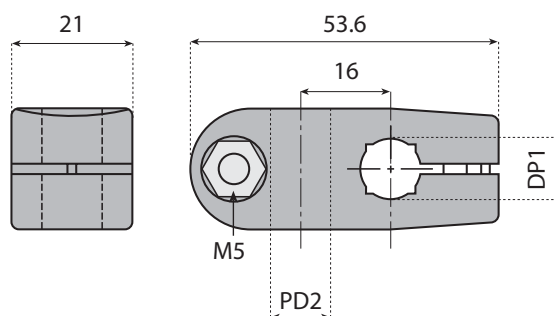
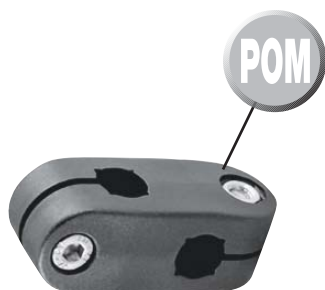
**Features:** cross blocks, in a variety of bore configurations, including square bore combinations, are manufactured from reinforced polyamide.

**Use:** connects two round or square rods at 90°.

**Material:** reinforced polyamide with stainless steel fasteners.

**Supply:** assembled.

Code	DP1		DP2		
	●	■	●	■	
<b>13151</b>	10	8	10	8	n°50
<b>13145</b>	10	8	12	10	
<b>13146</b>	10	8	14	12	
<b>13114</b>	12	10	12	10	
<b>13147</b>	12	10	14	12	
<b>13160</b>	14	12	14	12	



### HEAVY DUTY MINI CROSS BLOCK

**Features:** cross blocks, in a variety of bore configurations, including square bore combinations, are manufactured from reinforced polyamide.

**Use:** connects two round or square rods at 90°.

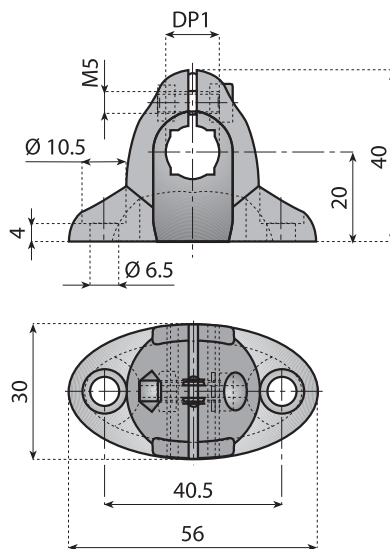
**Material:** acetal resin with stainless steel fasteners.

**Supply:** assembled.

Code	Ref.	DP1		DP2		
		●	■	●	■	
<b>13500114</b>	VG-619-10M	10	8	10	8	n°10
<b>13500115</b>	VG-619-12M	12	10	12	10	
<b>13500116</b>	VG-619-14M	14	12	14	12	

# T. Clamp

 Preferred type, readily available (codes marked in red)



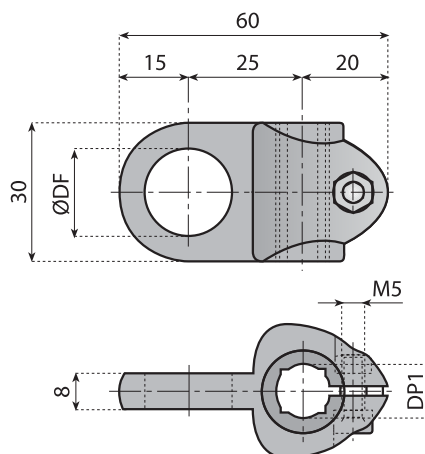
## T-CLAMP

**Features:** mounts to side of equipment to provide support for light duty rod type guide rail system.

**Material:** reinforced polyamide with stainless steel fasteners.

**Supply:** assembled.

Code	DP1		
	●	■	
13152	10	8	n°50
13115	12	10	
13161	14	12	



Code	DP1		Ø DF	
	●	■		
13600			8	n°50
13601			10	
13602	10	8	12	
13603			14	
13604			16	
13153			19	n°50
13605			8	
13606			10	
13607	12	10	12	
13608			14	
13609			16	n°50
13116			19	
13610			8	
13611			10	
13612	14	12	12	
13613			14	
13614			16	
13162			19	

## CLAMP

**Features:** used to hold many types of accessories. Numerous bore sizes available.

**Material:** reinforced polyamide with stainless steel fasteners.

**Supply:** assembled.



AISI 304  
Stainless steel



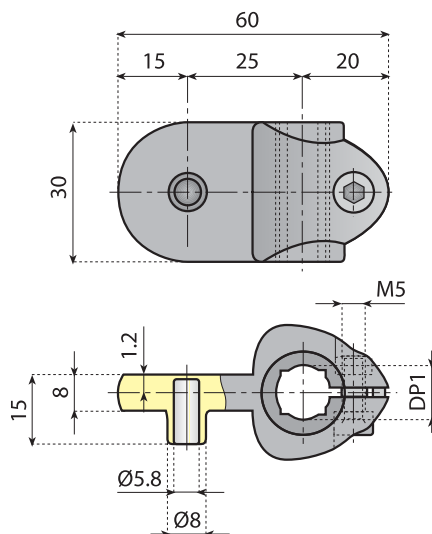
Reinforced  
polyamide



Accessories

# Reflector clamp

 Preferred type, readily available (codes marked in red)



AISI 304  
Stainless steel




Reinforced  
polyamide

## REFLECTOR CLAMP

**Features:** used to hold reflectors using a cap screw and nut or pression clip.

**Material:** reinforced polyamide with stainless steel fasteners.

**Supply:** assembled.

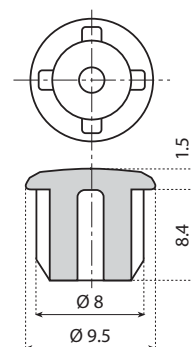
Code	DP1		
	●	■	
13157	10	8	n°50
13158	12	10	
13159	14	12	



## TUBE

- external d. 10 mm
- thickness 1 mm
- length 6 m

## CUP



Code		Material
13155	n°50	SS AISI 304

Code		Material
13156	n°100	PA-FG

# Mounting assembly kit

 Preferred type, readily available (codes marked in red)



AISI 304  
Stainless steel



Reinforced  
polyamide



Polyethylene



## REFLECTOR MOUNTING ASSEMBLY KIT (for reflector)

**Material:** clamps in reinforced polyamide tightening bolt and connecting tubes in stainless steel AISI 304, closing caps in polyethylene.

**Components:** nr° 1 T-Clamp, nr° 1 clamp, nr° 1 cross block, nr° 2 connecting tubes, nr° 4 closing caps.

**Supply:** unassembled.

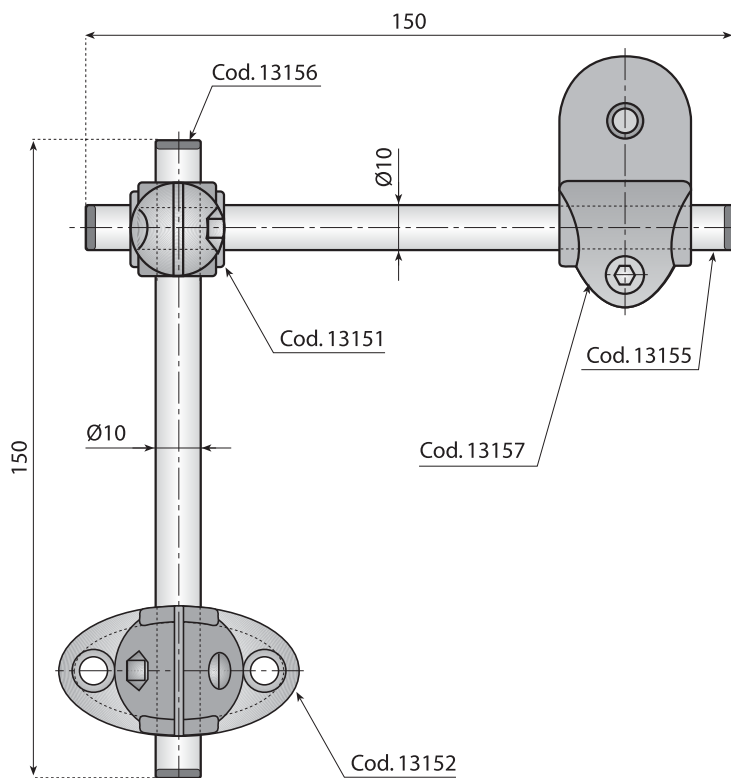
**\*Packaging:** 25 completely kit.

Code

**13148**



n°25\*



## SENSOR MOUNTING ASSEMBLY KIT (for Ø 18 mm sensor)

**Material:** clamps in reinforced polyamide tightening bolt and connecting tubes in stainless steel AISI 304, closing caps in polyethylene.

**Components:** nr° 1 T-Clamp, nr° 1 clamp, nr° 1 cross block, nr° 2 connecting tubes, nr° 4 closing caps.

**Supply:** unassembled.

**\*Packaging:** 25 completely kit.

Code

**13154**



n°25\*

