

## Standard cross blocks



AISI 304  
Stainless steel



Acetal resin

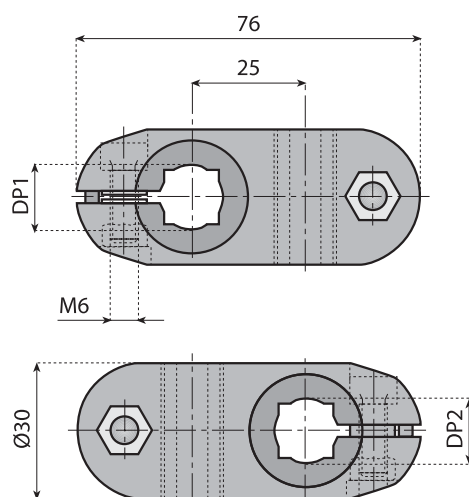


Reinforced  
polyamide



Accessories

Preferred type, readily available (codes marked in red)



Code	DP1		DP2		
	●	■	●	■	
<b>13105</b>	14	12	14	12	n°50
<b>13106</b>	14	12	15	—	
<b>13107</b>	14	12	16	14	
<b>13111</b>	14	12	18	—	
<b>13140</b>	14	12	20	16	
<b>13108</b>	15	—	15	—	
<b>13109</b>	15	—	16	14	
<b>13112</b>	15	—	18	—	
<b>13141</b>	15	—	20	16	
<b>13110</b>	16	14	16	14	
<b>13113</b>	16	14	18	—	
<b>13142</b>	16	14	20	16	
<b>13093</b>	18	—	18	—	
<b>13143</b>	18	—	20	16	
<b>13104</b>	20	16	20	16	
<b>13104K</b>	—	16	20	16	

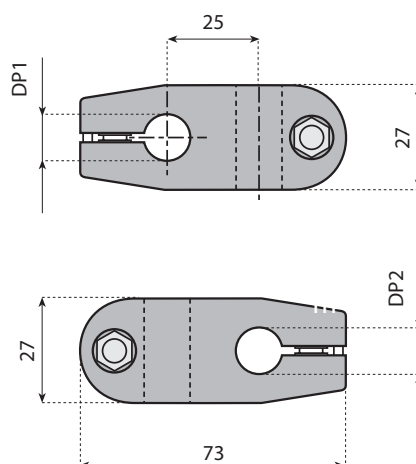
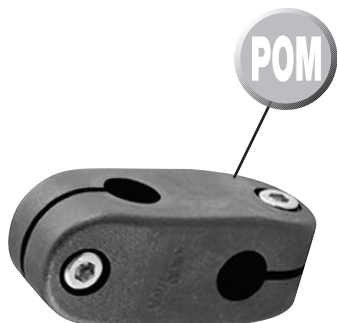
### CROSS BLOCK

**Features:** cross blocks, in a variety of bore configurations, including square bore combinations, are manufactured from reinforced polyamide.

**Use:** connects two round or square rods at 90°.

**Material:** reinforced polyamide with stainless steel fasteners.

**Supply:** assembled.



### HEAVY DUTY CROSS BLOCK

**Features:** cross blocks, in a variety of bore configurations, including square bore combinations, are manufactured from reinforced polyamide.

**Use:** connects two round or square rods at 90°.

**Material:** acetal resin with stainless steel fasteners.

**Supply:** assembled.

Code	Ref.	DP1	DP2	
<b>13S00106</b>	VG-620-12-12M	12	12	
<b>13S00107</b>	VG-620-12-16M	12	16	
<b>13S00108</b>	VG-620-14-14M	14	14	
<b>13S00109</b>	VG-620-15-15M	15	15	
<b>13S00110</b>	VG-620-16-16M	16	16	
<b>13S00111</b>	VG-620-18-18M	18	18	n°10