

Cross blocks

 Preferred type, readily available (codes marked in red)



AISI 304
Stainless steel



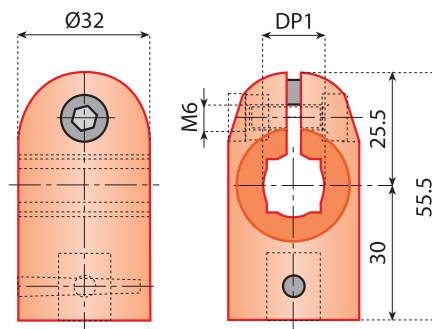
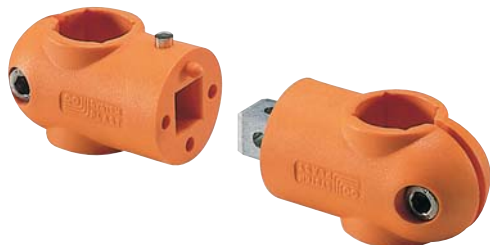
Nickel plated brass



Reinforced
polyamide



Accessories




CROSS BLOCKS

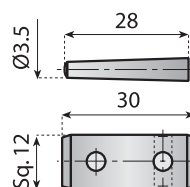
Features: cross blocks, in a variety of bore configurations, including square bore combinations, are manufactured from reinforced polyamide.

Use: it connects two round or square rods at 90°.

Material: reinforced polyamide with stainless steel bolts.

Supply: unassembled.

Code	DP1		
	●	■	
13666	14	12	n°100
13667	15	—	
13668	16	14	
13669	18	—	
13670	20	16	



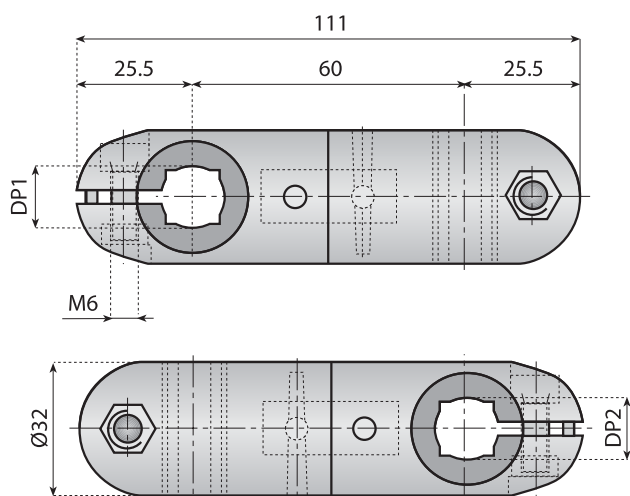
CONNECTING JOINT AND PINS

Supply: separate two pins and one connecting joints.

Code			Material
			
13671	n°100		Nickel plated brass

Extra long cross or parallel blocks

Preferred type, readily available (codes marked in red)



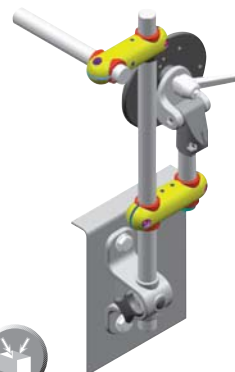
EXTRA LONG CROSS BLOCKS

Features: cross blocks, in a variety of bore configurations, including square bore combinations, are manufactured from reinforced polyamide.

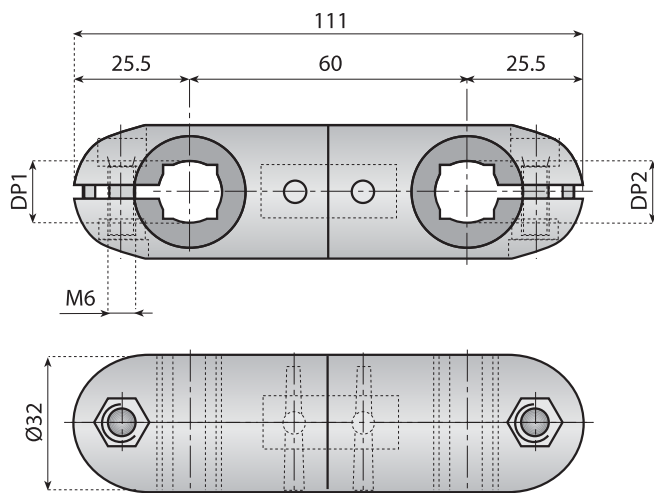
Use: it connects two round or square rods at 90°.

Material: reinforced polyamide with stainless steel bolts. Internal connecting joint and pins in nickel plated brass.

Supply: assembled.



Code	DP1		DP2		
	●	■	●	■	
13651P	14	12	14	12	n°100
13652P	14	12	15	–	
13653P	14	12	16	14	
13654P	14	12	18	–	
13655P	14	12	20	16	
13656P	15	–	15	–	
13657P	15	–	16	14	
13658P	15	–	18	–	
13659P	15	–	20	16	
13660P	16	14	16	14	
13661P	16	14	18	–	
13662P	16	14	20	16	
13663P	18	–	18	–	
13664P	18	–	20	16	
13665P	20	16	20	16	



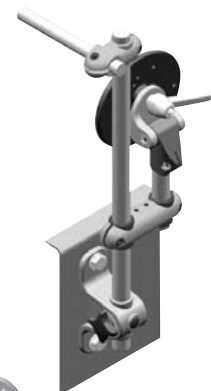
EXTRA LONG PARALLEL BLOCKS

Features: cross blocks, in a variety of bore configurations, including square bore combinations, are manufactured from reinforced polyamide.

Use: it connects two round or square rods at parallel.

Material: reinforced polyamide with stainless steel bolts. Internal connecting joint and pins in nickel plated brass.

Supply: assembled.



Code	DP1		DP2		
	●	■	●	■	
13651L	14	12	14	12	n°100
13652L	14	12	15	–	
13653L	14	12	16	14	
13654L	14	12	18	–	
13655L	14	12	20	16	
13656L	15	–	15	–	
13657L	15	–	16	14	
13658L	15	–	18	–	
13659L	15	–	20	16	
13660L	16	14	16	14	
13661L	16	14	18	–	
13662L	16	14	20	16	
13663L	18	–	18	–	
13664L	18	–	20	16	
13665L	20	16	20	16	