

## Cross blocks

 Preferred type, readily available (codes marked in red)



AISI 304  
Stainless steel



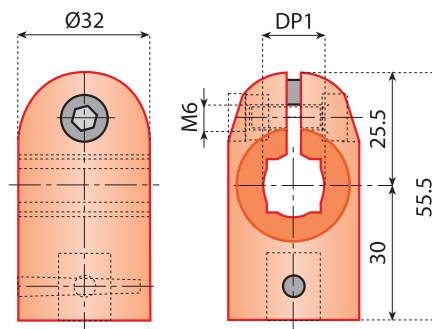
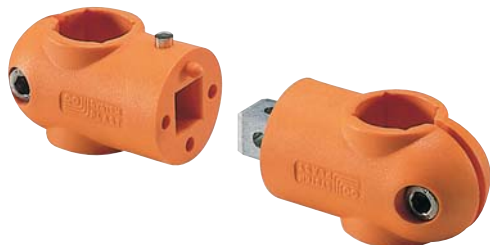
Nickel plated brass



Reinforced  
polyamide



Accessories




### CROSS BLOCKS

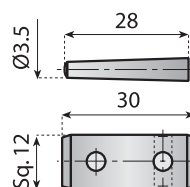
**Features:** cross blocks, in a variety of bore configurations, including square bore combinations, are manufactured from reinforced polyamide.

**Use:** it connects two round or square rods at 90°.

**Material:** reinforced polyamide with stainless steel bolts.

**Supply:** unassembled.

Code	DP1		
	●	■	
<b>13666</b>	14	12	n°100
<b>13667</b>	15	—	
<b>13668</b>	16	14	
<b>13669</b>	18	—	
<b>13670</b>	20	16	



### CONNECTING JOINT AND PINS

**Supply:** separate two pins and one connecting joints.

Code			Material
			
<b>13671</b>	n°100		Nickel plated brass

## T - Clamp (base)

 Preferred type, readily available (codes marked in red)



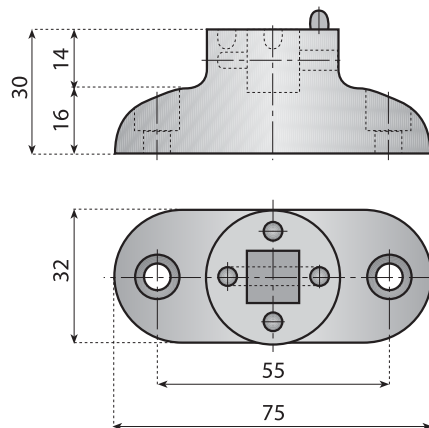
### T-MOBILE CLAMPS

**Features:** it mounts to the side of equipment to provide support for light duty application.

**Use:** with single cross block

**Material:** reinforced polyamide with stainless steel bolts.

**Supply:** unassembled

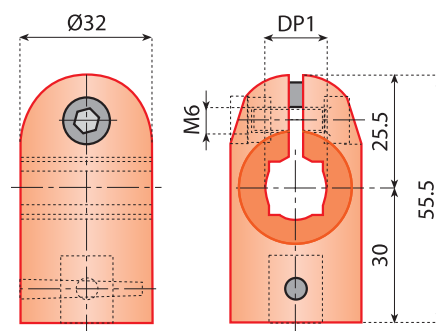
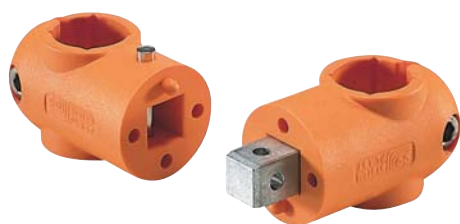


Code

**131008**



n°100



### CROSS BLOCKS

**Features:** cross blocks, in a variety of bore configurations, including square bore combinations, are manufactured from reinforced polyamide.

**Use:** connects two round or square rods at 90°.

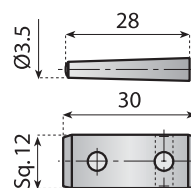
**Material:** reinforced polyamide with stainless steel bolts.

**Supply:** unassembled.

Code	DP1		
	●	■	
<b>13666</b>	14	12	n°100
<b>13667</b>	15	—	
<b>13668</b>	16	14	
<b>13669</b>	18	—	
<b>13670</b>	20	16	



n°100



### CONNECTING JOINT AND PINS

**Supply:** separate two pins and one connecting joints.

Code

**13671**



n°100



Nickel plated brass