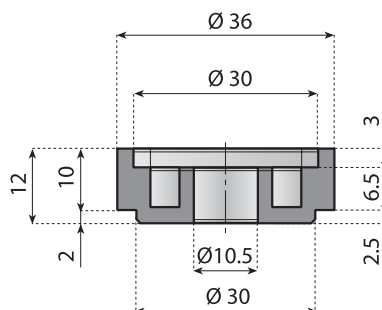


Adjustable heads and spacer

 Preferred type, readily available (codes marked in red)

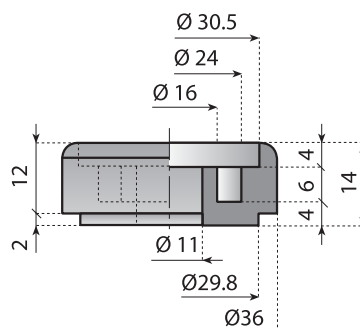


Reinforced
polyamide



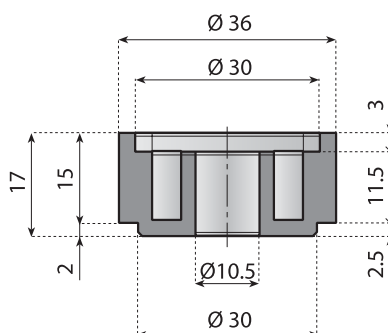
SPACER FOR ADJUSTABLE HEADS

Code		Material
13752	-	PA-FG



SPACER FOR ADJUSTABLE HEADS

Code		Material
13753	-	PA-FG



SPACER FOR ADJUSTABLE HEADS

Code		Material
13758	-	PA-FG

Adjustable heads



Preferred type, readily available (codes marked in red)



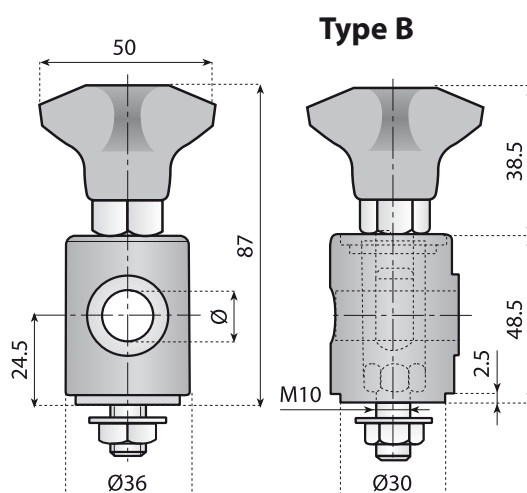
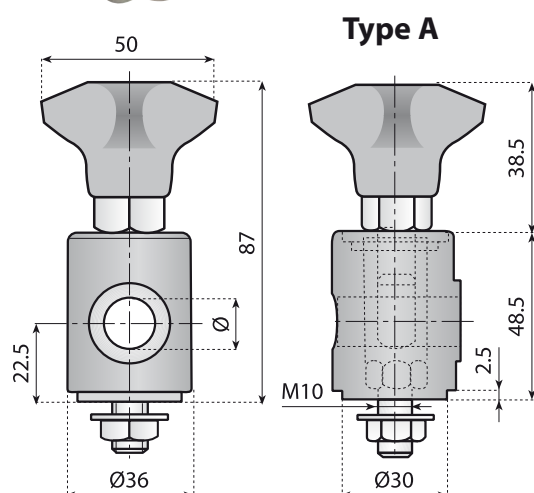
AISI 304
Stainless steel



Polyamide



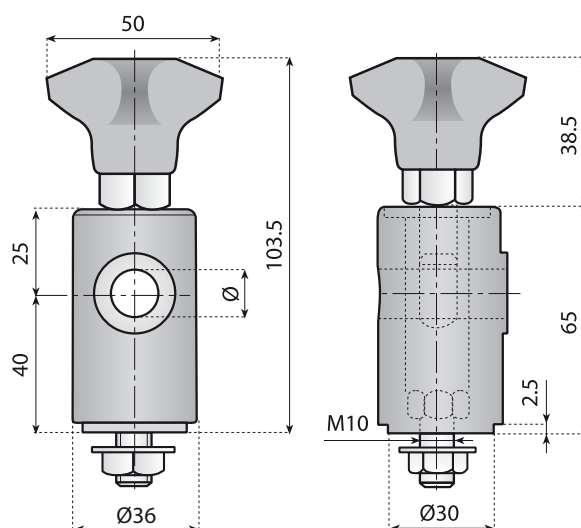
Accessories



ADJUSTABLE HEAD WITH KNOB

Material: reinforced polyamide, eyebolt, screw, washer in stainless steel AISI 304, nut and hexagonal bushing in nickel plated brass.

Code		Type	For rod Ø (mm)	
Head with knob	Head without knob			
13037V	13037	A	12	n°50
13038V	13038	A	14	
13039V	13039	A	16	
13999V	13999	B	19	
13988V	13988	B	20	

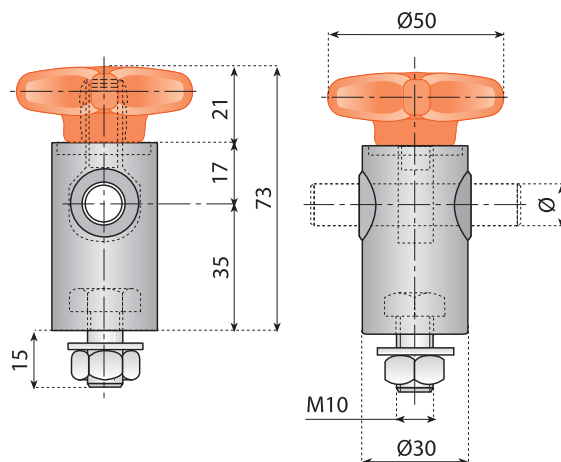


ADJUSTABLE HEAD WITH KNOB NEW TALLER VERSION

Material: reinforced polyamide, eyebolt, screw, nut and washer in stainless steel AISI 304, hexagonal bushing in nickel plated brass.

Code		For rod Ø (mm)	
Head with knob	Head without knob		
13781V	13781	12	n°50
13782V	13782	14	
13783V	13783	16	

Adjustable heads



QUICK POSITIONING ADJUSTABLE HEADS

Material: housing in reinforced polyamide; bolts and hardware in stainless steel; knobs in reinforced polyamide with brass bushing.

Code	For rod Ø (mm)	
13296V	12	n°50
13297V	14	



AISI 304
Stainless steel



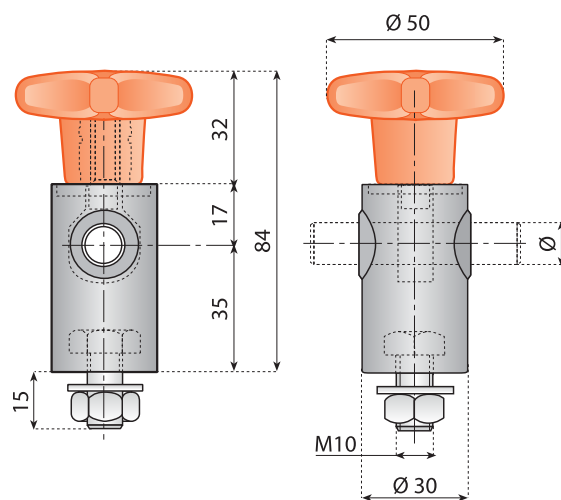
Nickel plated brass



Polyamide



Accessories



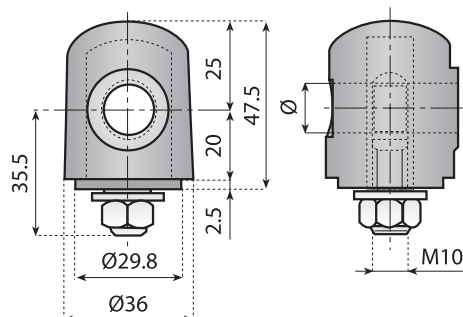
QUICK POSITIONING ADJUSTABLE HEADS

Material: housing in reinforced polyamide; bolts and hardware in stainless steel; knobs in reinforced polyamide with brass bushing.

Code	For rod Ø (mm)	
13296VA	12	n°50
13297VA	14	

Adjustable heads

 Preferred type, readily available (codes marked in red)



**SS
304**

AISI 304
Stainless steel

NPB

Nickel plated brass

PA

Polyamide

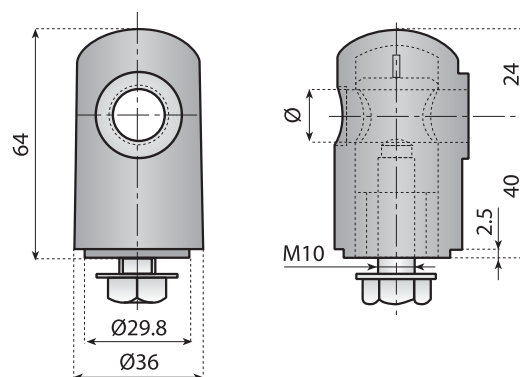
214 → 223

Accessories

ADJUSTABLE HEAD

Material: reinforced polyamide; eyebolt, nut and washer in stainless steel AISI 304.

Code	For rod Ø (mm)	
13028	12	
13029	14	n°50
13030	16	



ADJUSTABLE HEAD

Material: head in reinforced polyamide, Insert in nickel plated brass, screw and washer in stainless steel AISI 304.

Code	For rod Ø (mm)	
13017	12	
13018	14	n°50
13016	16	