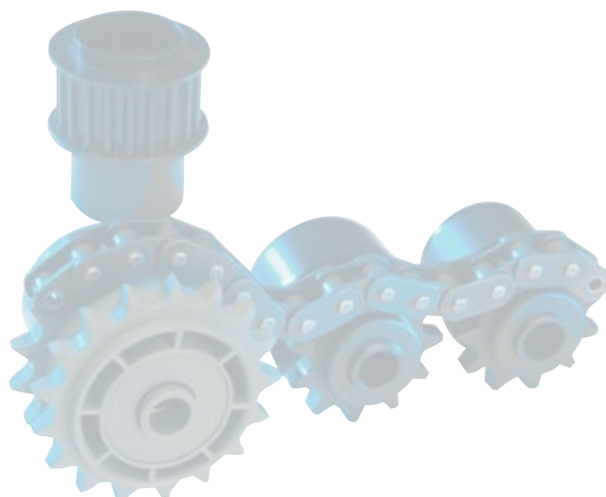
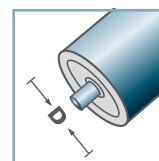
**KKR-1/2"x5/16"-Z11 for fix driving**

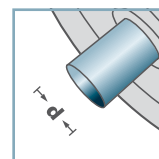
Type	Di +0,2	Da
50x1,5.40	47,3	49,9
50x2,0.40	46,3	49,9
50x2,8.40	44,6	49,9

Other dimensions on request!

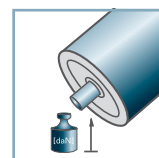
- ☛ Housing: Plastic
- ☛ Reducing Bush: Plastic
- ☛ Bearing 6202

**KKR-40**

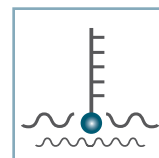
D [mm]
50



d [mm]
12



C [daN]
-



T [°C]
0° - 80°



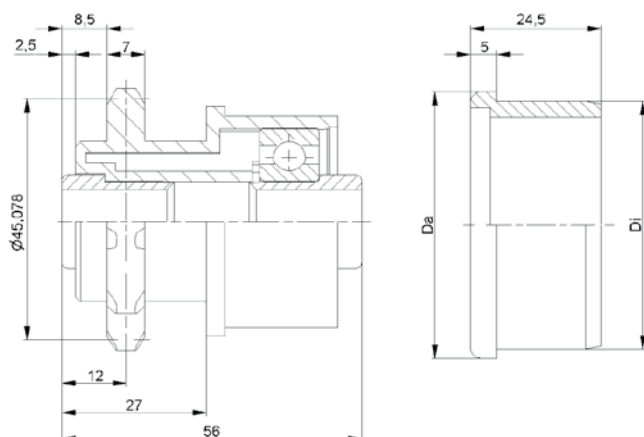
EP 2



Carton [pcs.]

150

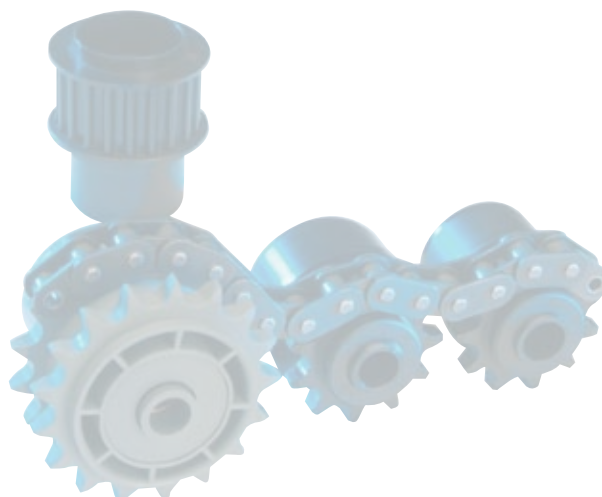
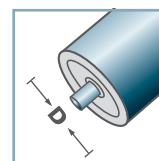
Sprockets

**KKR-1/2"x5/16"-Z11 for friction driving**

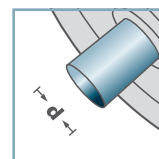
Type	Di +0,2	Da
50x1,5.40 ST	47,3	49,9
50x2,0.40 ST	46,3	49,9
50x2,8.40 ST	44,6	49,9

Other dimensions on request!

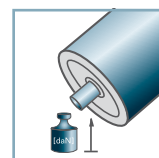
- ☛ Housing: Plastic
- ☛ Reducing Bush: Plastic
- ☛ Sliding Ring: Plastic
- ☛ Bearing 6202

**KKR-40**

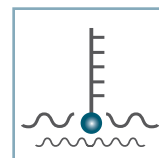
D [mm]
50



d [mm]
12



C [daN]
-



T [°C]
0° - 80°



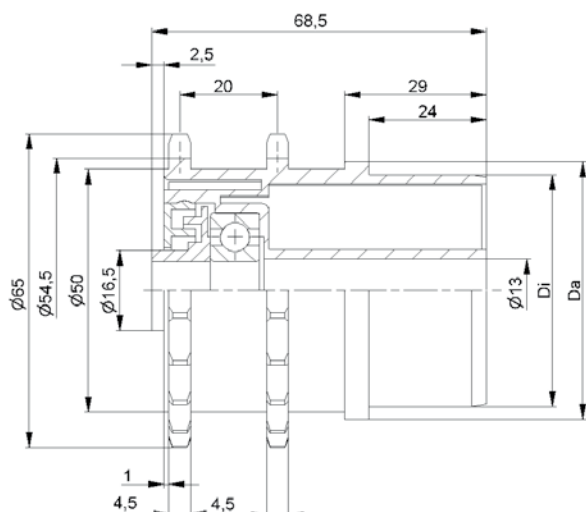
EP 2



Carton [pcs.]

Housing:
150
Sliding Ring:
300

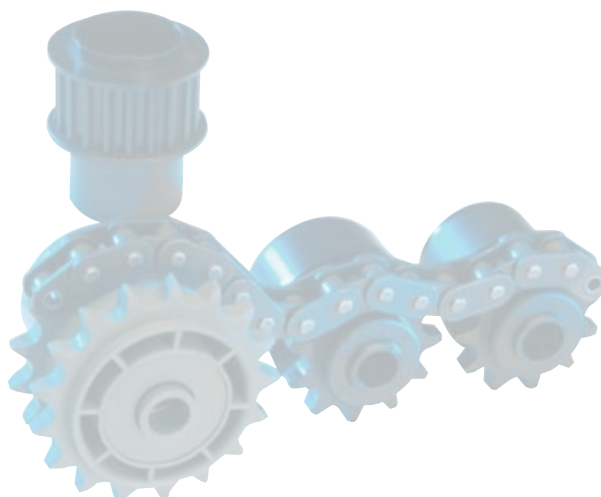
Sprockets

**KKR-3/8"x3/16"-Z20**

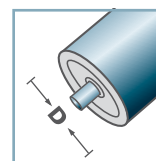
Type	Di +0,2	Da
53x3,0.41	47,6	52,9

Other dimensions on request!

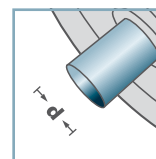
- Housing: Plastic
- Inner Labyrinth Seal: Plastic
- Outer Labyrinth Seal: Plastic
- Bearing 6201



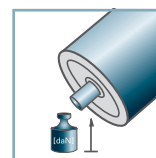
KKR-41



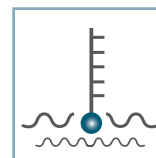
D [mm]
53



d [mm]
12



C [daN]



T [°C]
0° - 80°

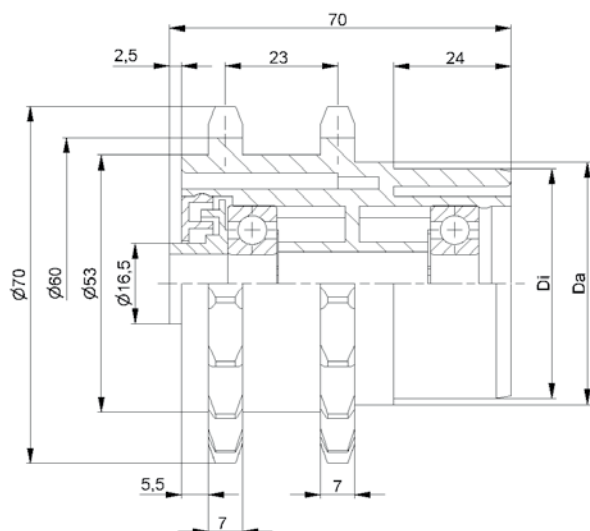


EP 2



Carton [pcs.]

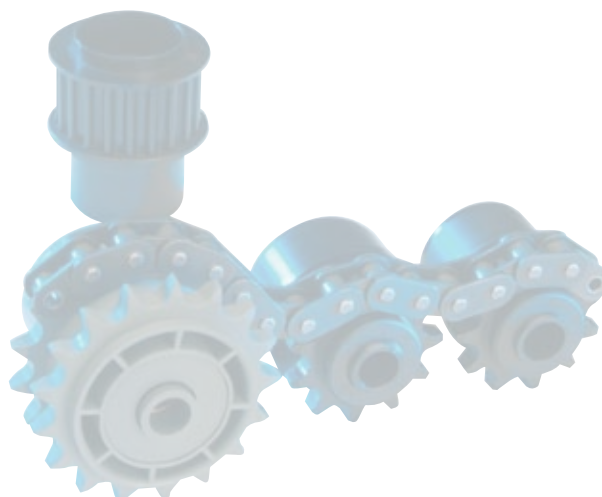
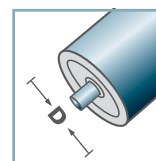
60

**KKR-1/2"x5/16"-Z17**

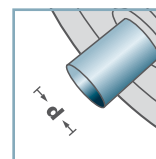
Type	Di +0,2	Da
50x1,5.41	47,3	49,8

Other dimensions on request!

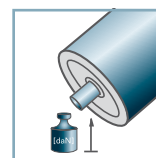
- ☛ Housing: Plastic
- ☛ Inner Labyrinth Seal: Plastic
- ☛ Outer Labyrinth Seal: Plastic
- ☛ Bearing 6201

**KKR-41**

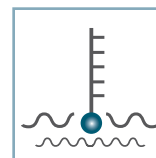
D [mm]
50



d [mm]
12



C [daN]
-



T [°C]
0° - 80°



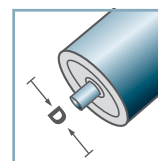
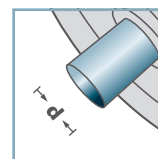
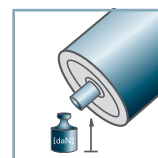
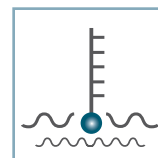
EP 2



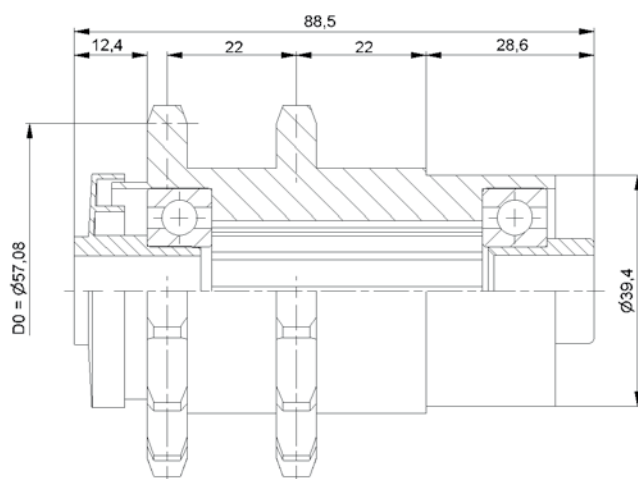
Carton [pcs.]

60

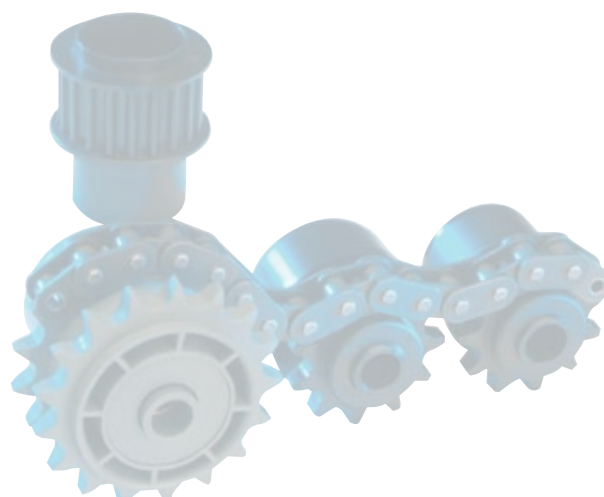
Sprockets

KKR-40**D** [mm]**d** [mm]
12**C** [daN]**T** [°C]
0° - 80°**C** [daN]**Carton** [pcs.]

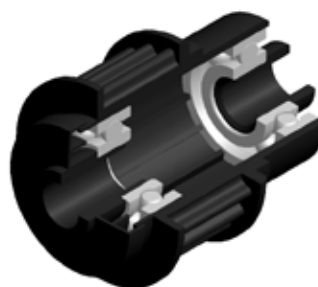
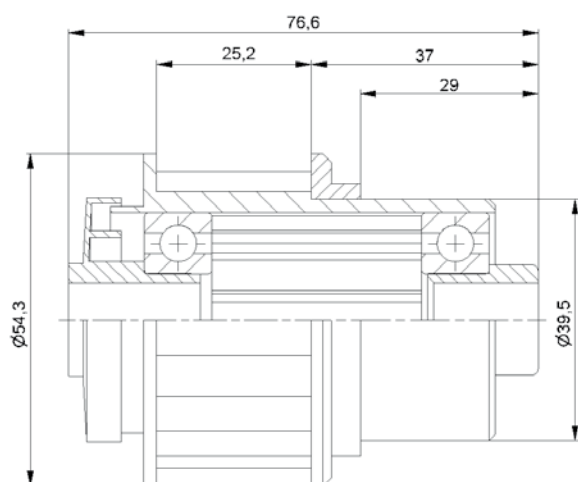
100

**KKR-1/2"x5/16"-Z14****Other dimensions on request!**

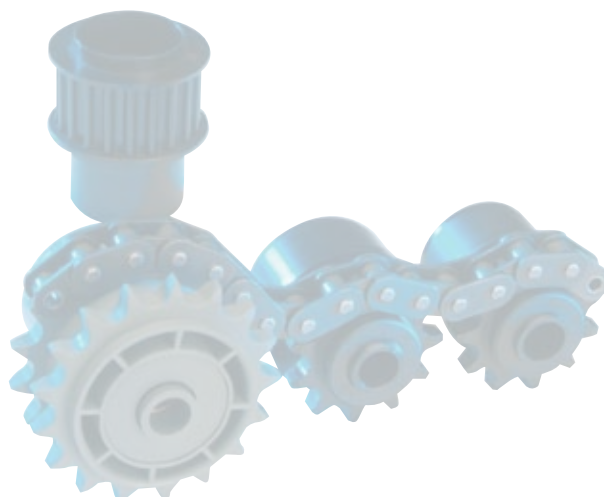
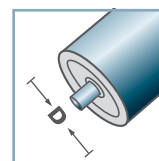
- ☛ Housing: Plastic
- ☛ Labyrinth Seal: Plastic
- ☛ Reducing Bush: Plastic
- ☛ Bearing 6202



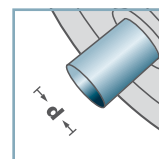
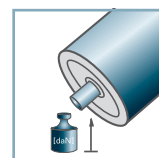
Sprockets

**KZA-Z20.40****Other dimensions on request!**

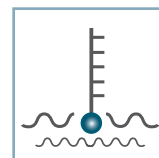
- ☛ Housing: Plastic
- ☛ Labyrinth Seal: Plastic
- ☛ Reducing Bush: Plastic
- ☛ Bearing 6202

**KZA-40****D** [mm]

-

**d** [mm]
12**C** [daN]

-

**T** [°C]
0° - 80°

-

**Carton** [pcs.]

100

Sprockets