

## MTR-01

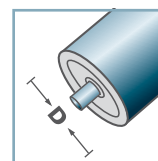
Type	Di	Da	Load Rating C [daN]
MTR-12x1,0.01	10,15	11,9	4

**Other dimensions on request!**

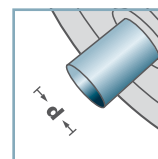
- ☛ Housing: Stainless
- ☛ Inner Race: Stainless
- ☛ Ball: Stainless



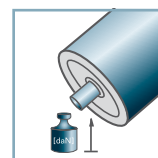
## MTR-01



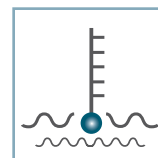
**D [mm]**  
12



**d [mm]**  
4



**C [daN]**  
4

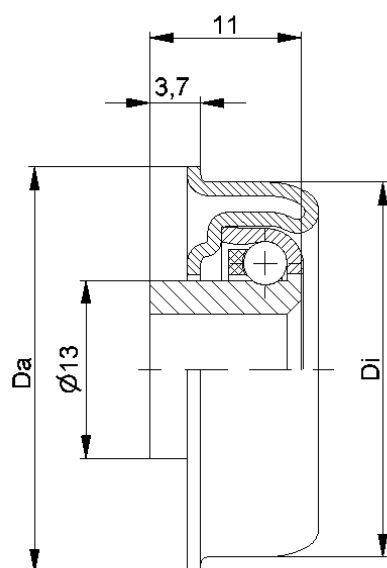


**T [°C]**  
0° - 100°



**Carton [pcs.]**

# MTR



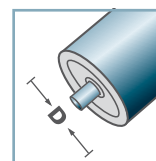
MTR-16			
Type	Di ±0.1	Da ±0.2	Load Rating C [daN]
MTR-30x1,2.16	27,6	29,6	30
MTR-30x1,5.16	27,3	29,6	30

**Other dimensions on request!**

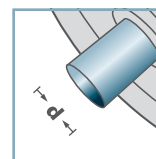
- ☛ Housing: Steel, Zinc plated
- ☛ Bearing RL-16
  - ☛ Bearing Shell: Steel, Hardened
  - ☛ Inner Race: Steel, Hardened, Zinc plated
  - ☛ Ball Cage: Plastic
  - ☛ Ball: Steel



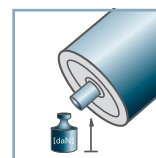
## MTR-16



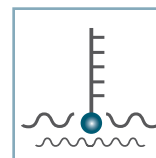
**D [mm]**  
30



**d [mm]**  
8; 10



**C [daN]**  
30



**T [°C]**  
0° - 100°



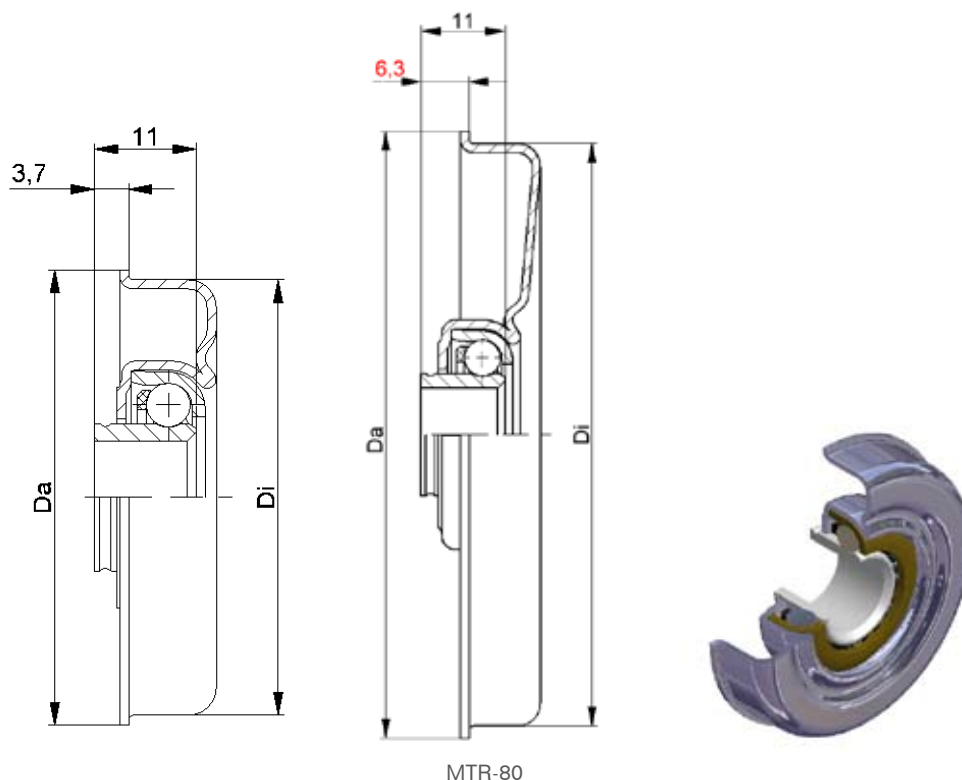
Vactra No. 2



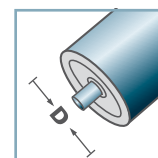
**Carton [pcs.]**

500

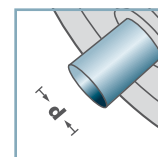
# MTR



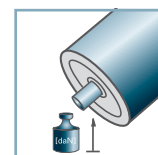
## MTR-20



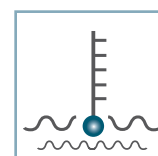
**D** [mm]  
40 - 80



**d** [mm]  
8; 10; 12; SW11



**C** [daN]  
80



**T** [°C]  
0° - 100°



Vactra No. 2



**Carton** [pcs.]

ø40:	250
ø48:	350
ø50:	350
ø60:	200
ø80:	125

## MTR-20

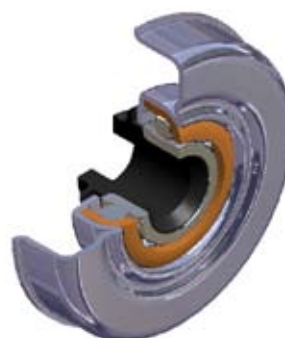
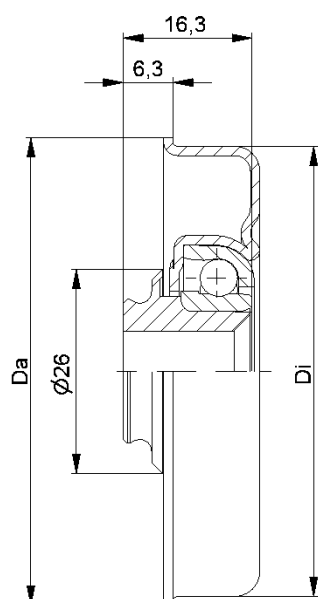
Type	Di ±0.1	Da ±0.2	Load Rating C [daN]
MTR-40x1,5.20	37,3	39,5	80
MTR-40x2,0.20	36,3	39,5	80
MTR-48x1,5.20	45,3	47,5	80
MTR-50x1,5.20	47,3	49,5	80
MTR-50x2,0.20	46,3	49,5	80
MTR-60x1,5.20	57,3	59,5	80
MTR-60x2,0.20	56,3	59,5	80
MTR-80x2,0.20	76,4	79,5	80

## Other dimensions on request!

- ☛ Housing: Steel, Zinc plated
- ☛ Bearing RL-20
  - ☛ Bearing Shell: Steel, Hardened
  - ☛ Inner Race: Steel, Hardened, Zinc plated
  - ☛ Ball Cage: Plastic
  - ☛ Ball: Steel



# MTR



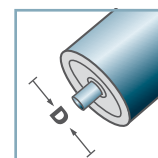
MTR-30			
Type	Di ±0.1	Da ±0.2	Load Rating C [daN]
MTR-50x1,5.30	47,3	49,5	120
MTR-50x2,0.30	46,3	49,5	120
MTR-50x3,0.30	44,3	49,5	120
MTR-60x1,5.30	57,3	59,5	120
MTR-60x2,0.30	56,3	59,5	120
MTR-80x2,0.30	76,4	79,5	120

**Other dimensions on request!**

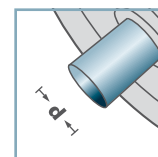
- ☛ Housing: Steel, Zinc plated
- ☛ Reducing Bush: Plastic
- ☛ Bearing RL-30
  - ☛ Bearing Shell: Steel, Hardened
  - ☛ Inner Race: Steel, Hardened
  - ☛ Ball: Steel



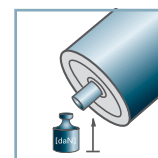
## MTR-30



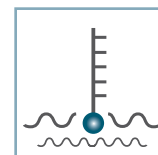
**D** [mm]  
50 - 80



**d** [mm]  
8; 10; 12; SW11



**C** [daN]  
120



**T** [°C]  
0° - 100°



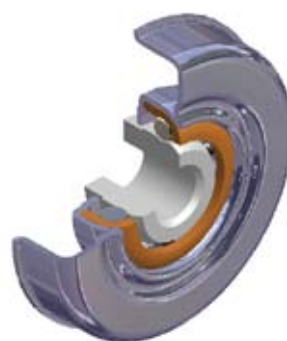
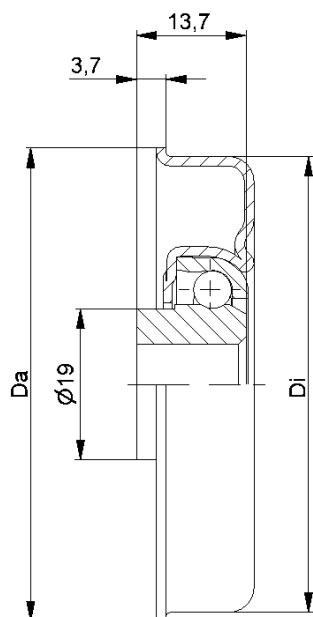
EP 0



**Carton** [pcs.]

ø50: 300  
ø60: 200  
ø80: 125

# MTR



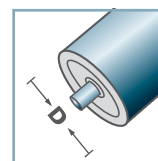
MTR-30-2			
Type	Di ±0.1	Da ±0.2	Load Rating C [daN]
MTR-50x1,5.30-2	47,3	49,5	120
MTR-50x2,0.30-2	46,3	49,5	120
MTR-60x1,5.30-2	57,3	59,5	120
MTR-60x2,0.30-2	56,3	59,5	120
MTR-80x2,0.30-2	76,4	79,5	120

## Other dimensions on request!

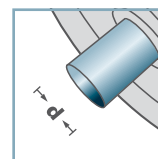
- ☛ Housing: Steel, Zinc plated
- ☛ Bearing RL-30-2
  - ☛ Bearing Shell: Steel, Hardened
  - ☛ Inner Race: Steel, Hardened
  - ☛ Ball: Steel



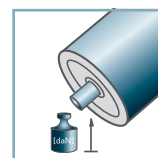
## MTR-30-2



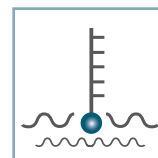
**D** [mm]  
50 - 80



**d** [mm]  
12; 14; 15; SW11



**C** [daN]  
120



**T** [°C]  
0° - 100°



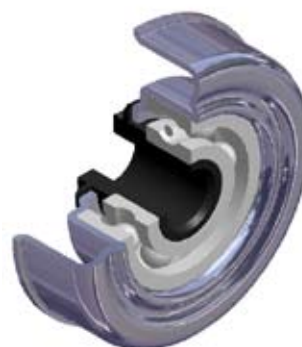
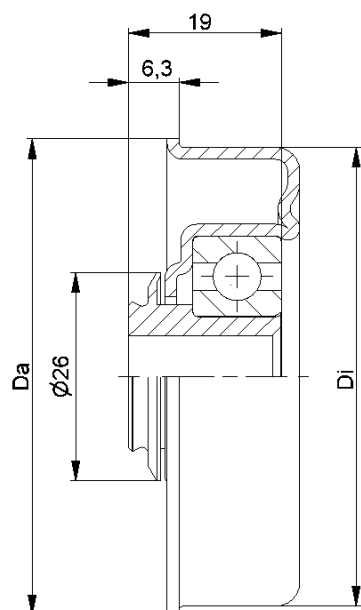
EP 0



**Carton** [pcs.]

ø50: 300  
ø60: 200  
ø80: 125

# MTR



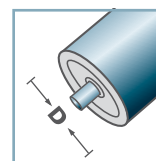
MTR-40			
Type	Di ±0.1	Da ±0.2	Load Rating C [daN]
MTR-50x1,5.40	47,3	49,5	120
MTR-50x2,0.40	46,3	49,5	120
MTR-60x1,5.40	57,3	59,5	150
MTR-60x2,0.40	56,3	59,5	150
MTR-60x3,0.40	54,3	59,5	150
MTR-80x2,0.40	76,5	79,5	150

**Other dimensions on request!**

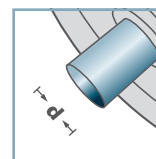
- ⚙ Housing: Steel, Zinc plated
- ⚙ Reducing Bush: Plastic
- ⚙ Bearing 6202



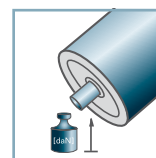
## MTR-40



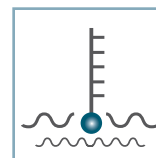
**D** [mm]  
50 - 80



**d** [mm]  
10; 12; SW11



**C** [daN]  
120 - 150



**T** [°C]  
0° - 80°



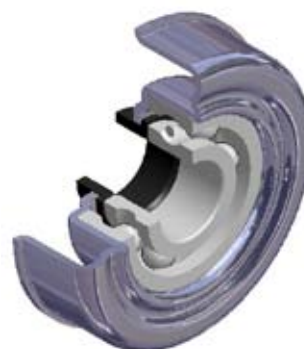
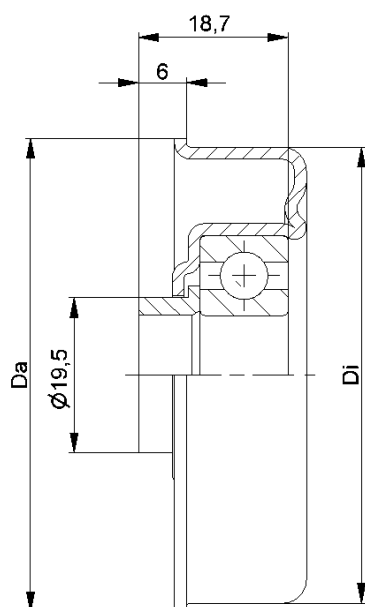
EP 2



**Carton** [pcs.]

ø50: 100  
ø60: 200  
ø80: 125

# MTR



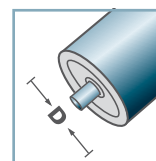
MTR-40.15			
Type	Di ±0.1	Da ±0.2	Load Rating C [daN]
MTR-50x1,5.40.15	47,3	49,5	120
MTR-50x2,0.40.15	46,3	49,5	120
MTR-60x1,5.40.15	57,3	59,5	150
MTR-60x2,0.40.15	56,3	59,5	150
MTR-60x3,0.40.15	54,3	59,5	150
MTR-70x2,0.40.15	66,4	69,5	150
MTR-80x2,0.40.15	76,5	79,5	150

**Other dimensions on request!**

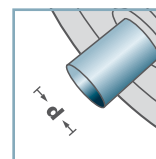
- ⚙ Housing: Steel, Zinc plated
- ⚙ Distance Bush: Plastic
- ⚙ Bearing 6202



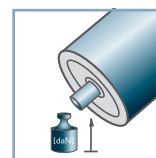
## MTR-40.15



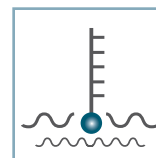
**D** [mm]  
50 - 80



**d** [mm]  
15



**C** [daN]  
120 - 150



**T** [°C]  
0° - 80°



EP 2

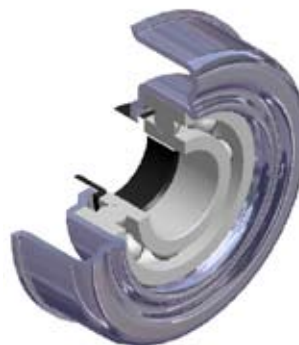
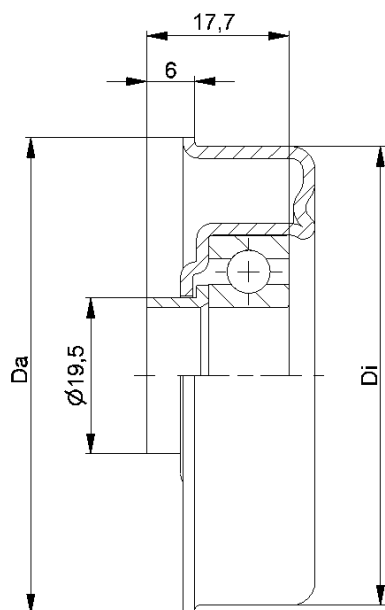


**Carton** [pcs.]

ø50: 100  
ø60: 200  
ø70: 125  
ø80: 125

# MTR





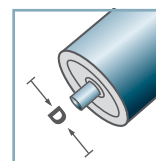
MTR-45.17			
Type	Di ±0.1	Da ±0.2	Load Rating C [daN]
MTR-50x1,5.45.17	47,3	49,5	120
MTR-80x2,0.45.17	76,5	79,5	150

**Other dimensions on request!**

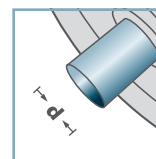
- ☛ Housing: Steel, Zinc plated
- ☛ Distance Bush: Plastic
- ☛ Bearing 6003



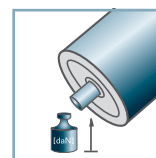
## MTR-45.17



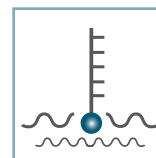
**D [mm]**  
80



**d [mm]**  
17



**C [daN]**  
150



**T [°C]**  
0° - 80°



EP 2

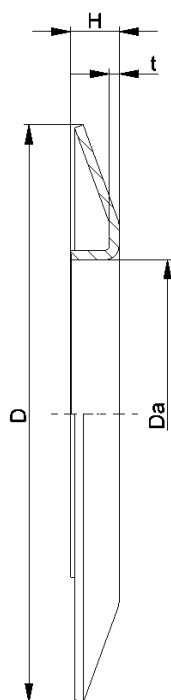


**Carton [pcs.]**

ø50: 100  
ø80: 125

# MTR





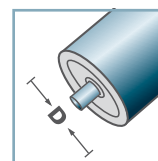
BS-				
Type	Da ±0.1	D -2	H ±0.5	t
BS-50-130	49,9	130	10	1,5
BS-60-130	59,9	130	10	1,5
BS-80-150	79,9	150	14	2,5
BS-89-150	88,9	150	14	2,5
BS-108-150	107,9	150	14	2,5

**Other dimensions on request!**

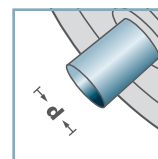
**C** Wheel Flange: Steel



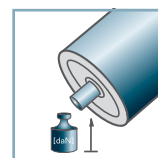
**BS-**



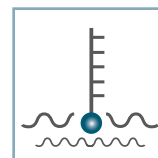
**D** [mm]  
50 - 108



**d** [mm]  
-



**C** [daN]  
-



**T** [°C]  
-

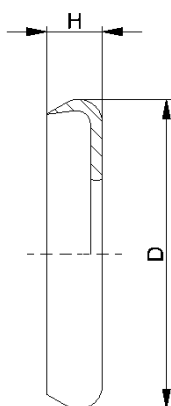


-



**Carton** [pcs.]

25

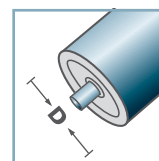


DK-MTR		
Type	D	H
DK-MTR-20	34	7
DK-MTR-30-2	39	7
Other dimensions on request!		

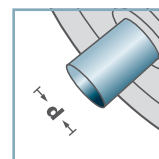
Seal Bonnet: Plastic



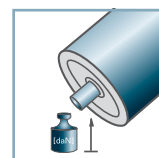
## DK-MTR-



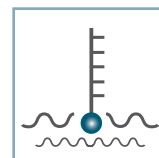
D [mm]



d [mm]



C [daN]

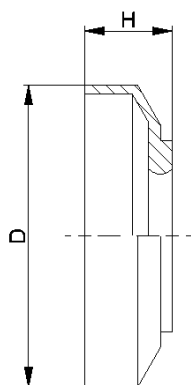


T [°C]  
0° - 80°



Carton [pcs.]

# MTR

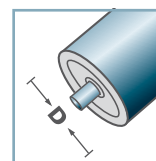


DK-MTR		
Type	D	H
DK-MTR-30	38	11
Other dimensions on request!		

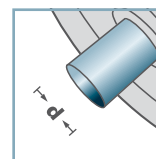
 Seal Bonnet: Plastic



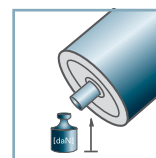
## DK-MTR-



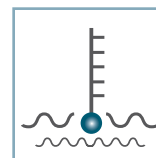
**D** [mm]



**d** [mm]



**C** [daN]



**T** [°C]  
0° - 80°



**Carton** [pcs.]

# MTR