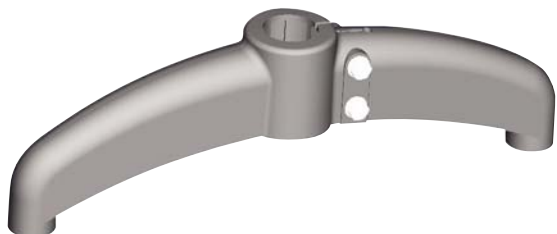


Support bases



- **Cross ribs**
- **Improved load resistance**
- **Increased thickness**
- **Improved flex resistance**

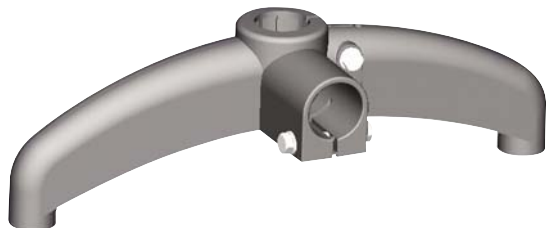
New
Design

BIPODS

Material: reinforced polyamide threaded bushings and spacers in nickel plated brass.

Fasteners: see table on the right.

Packaging: 15 pieces.



Range Extension

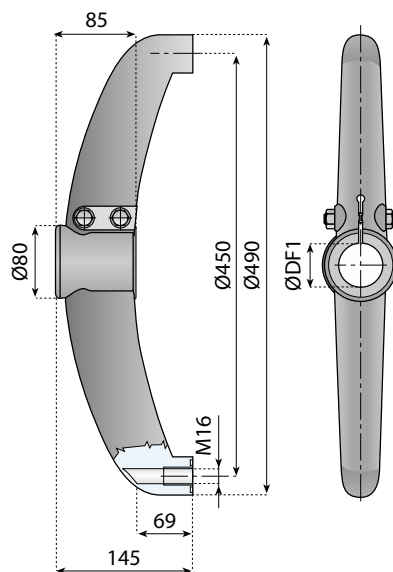
- **Cross ribs**
- **Improved load resistance**
- **Increased thickness**
- **Improved flex resistance**

BIPODS 180° WITH JOINT

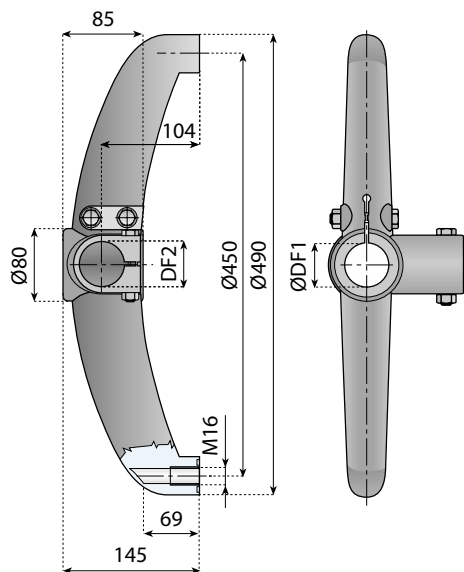
Material: reinforced polyamide threaded bushings and spacers in nickel plated brass.

Fasteners: see table on the right.

Packaging: 15 pieces.



Code	DF1 - for tube Ø		Fasteners
	mm	inch.	
15726N	42.4	1.1/4	Zinc plated steel
15700N	48.3	1.1/2	
15728N	50.9	–	
15730N	60.3	2	
15727N	42.4	1.1/4	Stainless steel AISI 304
15725N	48.3	1.1/2	
15729N	50.9	–	
15731N	60.3	2	



Code	DF1 - for tube Ø		DF2 - for tube Ø		Fasteners
	mm	inch.	mm	inch.	
15353N	42.4	1.1/4	42.4	1.1/4	Zinc plated steel
15701N	48.3	1.1/2	42.4	1.1/4	
15735N	50.9	–	42.4	1.1/4	
15737N	60.3	2	42.4	1.1/4	
15354N	42.4	1.1/4	42.4	1.1/4	Stainless steel AISI 304
15732N	48.3	1.1/2	42.4	1.1/4	
15736N	50.9	–	42.4	1.1/4	
15738N	60.3	2	42.4	1.1/4	
15356N	48.3	1.1/2	48.3	1.1/2	Zinc plated steel
15357N	50.9	–	48.3	1.1/2	
15358N	60.3	2	48.3	1.1/2	
15360N	48.3	1.1/2	48.3	1.1/2	
15361N	50.9	–	48.3	1.1/2	Stainless steel AISI 304
15362N	60.3	2	48.3	1.1/2	



304 Stainless steel



Nickel plated brass

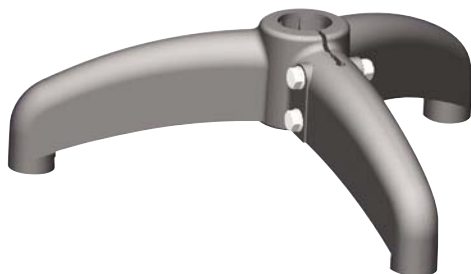


Polyamide



Zinc plated steel

Support bases



- *Cross ribs*
- *Improved load resistance*
- *Increased thickness*
- *Improved flex resistance*

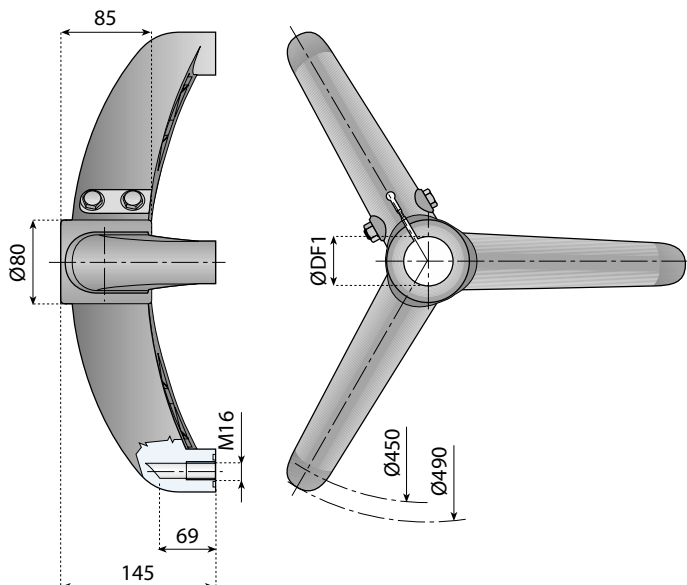
TRIPODS

Material: reinforced polyamide threaded bushings and spacers in nickel plated brass.

Fasteners: see table on the right.

Packaging: 15 pieces.

New
Design



Code	DF1 - for tube Ø		Fasteners
	mm	inch.	
15702N	42.4	1.1/4	Zinc plated steel
15506N	48.3	1.1/2	
15818N	50.9	–	
15510N	60.3	2	
15703N	42.4	1.1/4	Stainless steel AISI 304
15507N	48.3	1.1/2	
15826N	50.9	–	
15511N	60.3	2	



304 Stainless steel



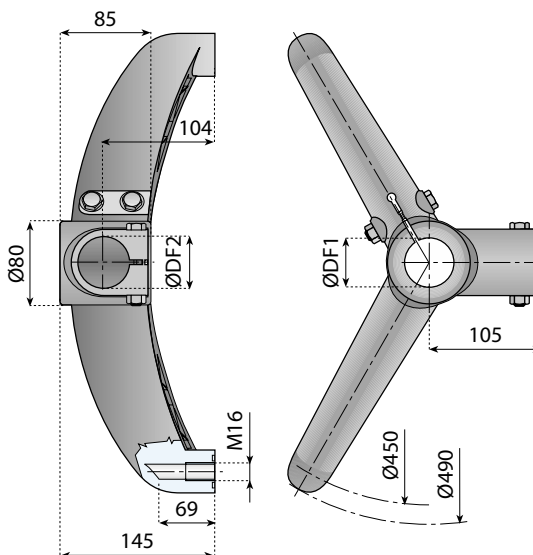
Nickel plated brass



Polyamide



Zinc plated steel



Code	DF1 - for tube Ø		DF2 - for tube Ø		Fasteners
	mm	inch.	mm	inch.	
15340N	42.4	1.1/4	42.4	1.1/4	Zinc plated steel
15341N	48.3	1.1/2	42.4	1.1/4	
15342N	50.9	–	42.4	1.1/4	
15343N	60.3	2	42.4	1.1/4	
15344N	42.4	1.1/4	42.4	1.1/4	Stainless steel AISI 304
15335N	48.3	1.1/2	42.4	1.1/4	
15337N	50.9	–	42.4	1.1/4	
15339N	60.3	2	42.4	1.1/4	
15346N	48.3	1.1/2	48.3	1.1/2	Zinc plated steel
15347N	50.9	–	48.3	1.1/2	
15348N	60.3	2	48.3	1.1/2	
15350N	48.3	1.1/2	48.3	1.1/2	
15351N	50.9	–	48.3	1.1/2	Stainless steel AISI 304
15352N	60.3	2	48.3	1.1/2	

- *Cross ribs*
- *Improved load resistance*
- *Increased thickness*
- *Improved flex resistance*

BIPODS 120° WITH JOINT

Material: reinforced polyamide threaded bushings and spacers in nickel plated brass.

Fasteners: see table on the right.

Packaging: 15 pieces.

Support bases



Bipods

- Cross ribs
- Improved load resistance
- Increased thickness
- Improved flex resistance

TECHNICAL INFORMATION

- **Material:**
Reinforced polyamide threaded bushings and spacers in nickel plated brass.
- **Fasteners:**
See table on the right.

Bipods 120° with joint

- Cross ribs
- Improved load resistance
- Increased thickness
- Improved flex resistance



TECHNICAL INFORMATION

- **Material:**
Reinforced polyamide threaded bushings and spacers in nickel plated brass.
- **Fasteners:**
See table on the right.



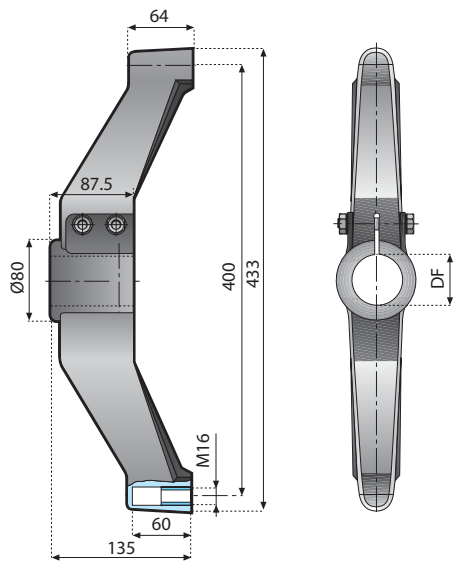
Bipods 180° with joint

- Cross ribs
- Improved load resistance
- Increased thickness
- Improved flex resistance

TECHNICAL INFORMATION

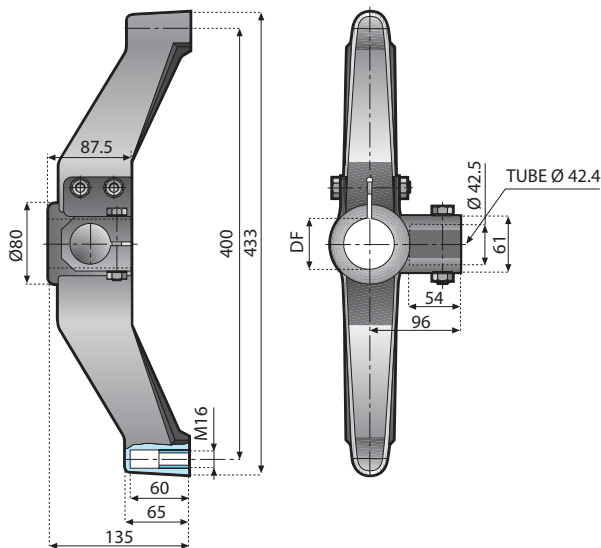
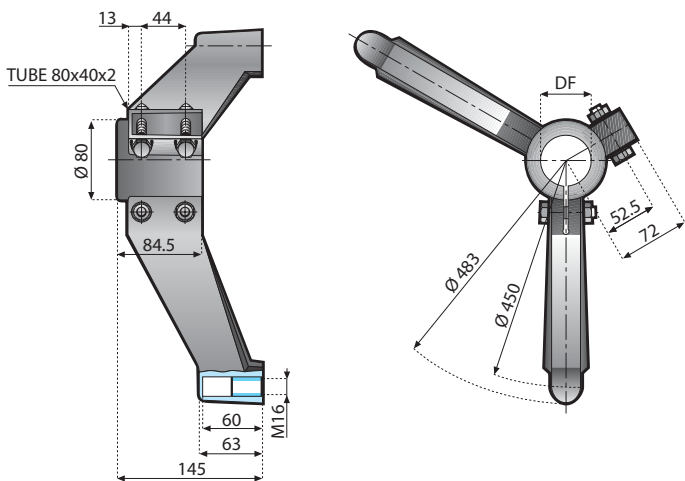
- **Material:**
Reinforced polyamide threaded bushings and spacers in nickel plated brass.
- **Fasteners:**
See table on the right.

Support bases



code	DF - for tube Ø		fasteners
	mm.	inch.	
15726	42.4	1 1/4	ZINC PATED STEEL
15700	48.3	1 1/2	
15728	50.9	-	
15730	60.3	2	
15727	42.4	1 1/4	STAINLESS STEEL AISI 304
15725	48.3	1 1/2	
15729	50.9	-	
15731	60.3	2	

code	DF - for tube Ø		fasteners
	mm.	inch.	
15704	42.4	1 1/4	ZINC PATED STEEL
15508	48.3	1 1/2	
15817	50.9	-	
15512	60.3	2	
15705	42.4	1 1/4	STAINLESS STEEL AISI 304
15509	48.3	1 1/2	
15825	50.9	-	
15513	60.3	2	



code	DF - for tube Ø		fasteners
	mm.	inch.	
15701	48.3	1 1/2	ZINC PATED STEEL
15735	50.9	-	
15737	60.3	2	
15732	48.3	1 1/2	STAINLESS STEEL AISI 304
15736	50.9	-	
15738	60.3	2	

Support bases



Bipods

- Cross ribs
- Improved load resistance
- Increased thickness
- Improved flex resistance

TECHNICAL INFORMATION

- **Material:**
Reinforced polyamide threaded bushings and spacers in nickel plated brass.
- **Fasteners:**
See table on the right.

Tripods

- Cross ribs
- Improved load resistance
- Increased thickness
- Improved flex resistance



TECHNICAL INFORMATION

- **Material:**
Reinforced polyamide threaded bushings and spacers in nickel plated brass.
- **Fasteners:**
See table on the right.

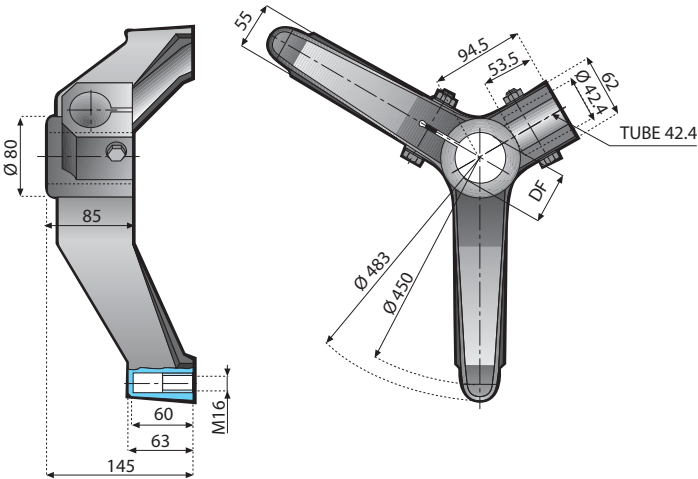
Reduction Bush



TECHNICAL INFORMATION

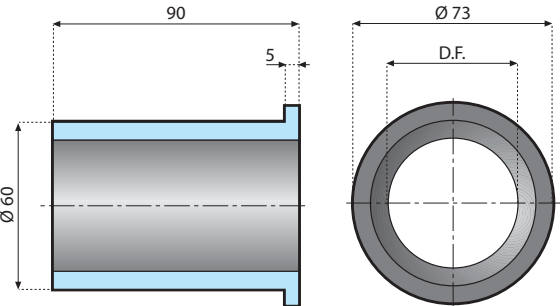
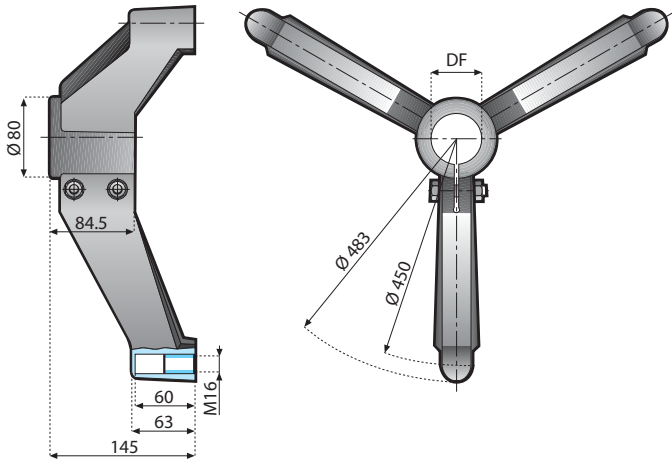
- **Material:**
Polyamide.

Support bases



code	DF - for tube Ø		fasteners
	mm.	inch.	
15335	48.3	1½	STAINLESS
15337	50.9	–	STEEL
15339	60.3	2	AISI 304

code	DF - for tube Ø		fasteners
	mm.	inch.	
15702	42.4	1¼	ZINC PATED STEEL
15506	48.3	1½	
15818	50.9	–	
15510	60.3	2	
15703	42.4	1¼	STAINLESS STEEL AISI 304
15507	48.3	1½	
15826	50.9	–	
15511	60.3	2	



code	DF - for tube Ø	
	mm.	inch.
15204	50.9	–
15205	48.3	1½
15206	42.4	1¼
15207	50	–

Support bases **Split bipods**



CHARACTERISTICS

COMPLETELY CLOSED VERSION

- This split version permits a better clamping of both round and square tubes. Each bipod is supplied complete with ultrasonic welded protection coverings, which prevent dirt, dust or liquid infiltration in the lower part of the base.
- Reinforced design
- Completely closed structure easier to clean and to disinfect

TECHNICAL INFORMATION

- **Material:**
Reinforced polyamide; threaded bushings in nickel plated brass; fasteners in S/S AISI 304.



CHARACTERISTICS

COMPLETELY CLOSED VERSION

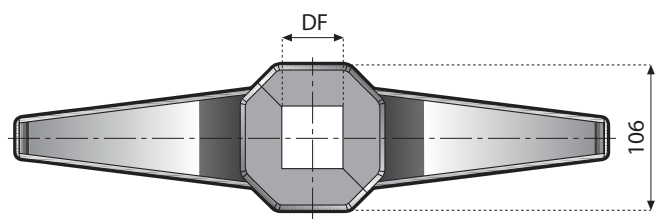
- **Characteristics:**
This split version permits a better clamping of both round and square tubes. Each bipod is supplied complete with ultrasonic welded protection coverings, which prevent dirt, dust or liquid infiltration in the lower part of the base.
- Reinforced design
- Completely closed structure easier to clean and to disinfect

TECHNICAL INFORMATION

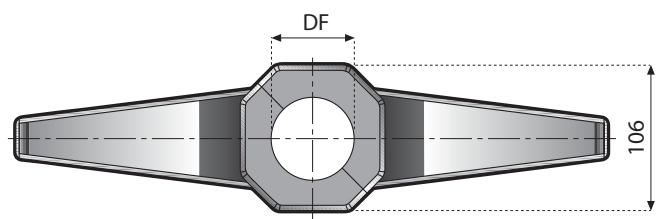
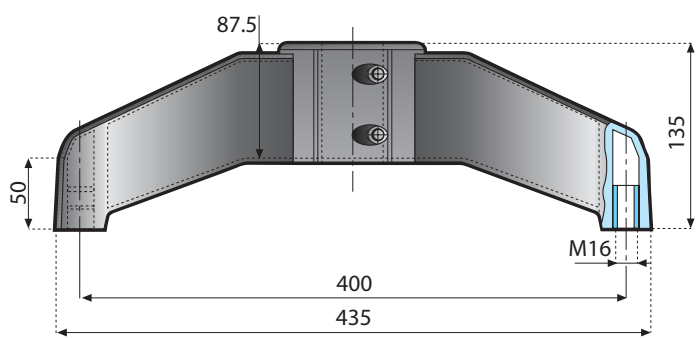
- **Material:**
Reinforced polyamide; threaded bushings in nickel plated brass; fasteners in S/S AISI 304.

Support bases

Split bipods



code	DF - ∇	
	mm.	mm.
15499	45 x 45	–
15500	50 x 50	2.38 x 2.38



code	DF - for tube \varnothing	
	mm.	mm.
15502	48.3	1 $\frac{1}{2}$
15501	60.3	1 $\frac{1}{4}$